

Storm rolling into Lake Tahoe

Updated 3:04pm Dec. 29.

By Kathryn Reed

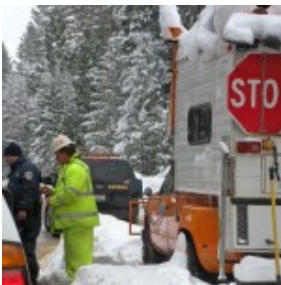
A winter weather advisory has been issued for Lake Tahoe from 7pm Tuesday to 10am Wednesday.

Four to 8 inches could fall at the lake, while elevations about 7,000 feet could receive a foot of snow overnight.

The wind will be picking up as the storm moves in. Ridge tops could have gusts of 100mph.

About an inch of dry, fluffy snow greeted people on the South Shore of Lake Tahoe this morning.

Interstate 80 reopened early this morning after a wrong-way driver caused a double fatal accident near the Newcastle exit, according to the California Highway Patrol.



Expect chain controls on most Sierra roads for the next few days.

Photo/Kathryn Reed

All roads into and out of the Lake Tahoe Basin are open. Chain restrictions are in affect on some roads. Check the Home page

of *Lake Tahoe News* for road condition information for California and Nevada.

The avalanche warning for the back country is moderate.

Ski resorts in and around the basin are reporting several inches of fresh snow. Sierra-at-Tahoe has opened Gate 1 into Huckleberry Canyon.

If flying out of Reno-Tahoe International Airport, call to make sure your flight in on time. For those using Sacramento International, the Sac Valley is supposed to be socked in with dense fog this morning so flights may be delayed.

In Lake Tahoe, snow could still be coming down on New Year's Eve – which may make outdoor festivities to ring in the New Year even more exciting. It may mean the blue moon will be obscured. A blue moon occurs when there are two full moons in the same month.

Zephyr Cove is offering a full moon snowmobile tonight. Call for reservations – 800-23-Tahoe.

Expect the temps to be in the high 30s-low 40s around the lake for the next few days, with overnight lows in the 20s – though probably colder on a snowmobile.