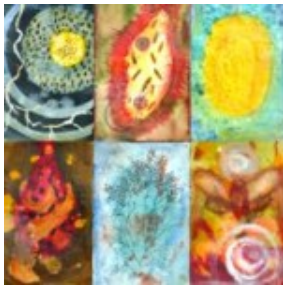


3 artists bring works to LTCC for fall show

Lake Tahoe Community College's Haldan Art Gallery is about to showcase the work of three Bay Area artists whose work is derived either literally or abstractly from organic form.

The exhibit opens Sept. 30 and runs through Dec. 3. There will be a reception for the artists Sept. 30 from 6 to 8pm, with an artists' talk in the gallery from 5 to 6pm. The reception is free and open to the public.



Joy Broom's art will be at Lake Tahoe Community College.

In addition to an extensive professional art career spanning three decades, Joy Broom is a full-time art instructor at Diablo Valley College in Pleasant Hill. With a drawing and painting style that is uniquely hers, Broom's imagery ranges from precise botanicals to da Vinci's faces to scary insect forms. She has shown in numerous galleries throughout the Bay Area and the West Coast. In 1992 Broom was awarded a WESTAF/NEA Regional Fellowship for Visual Artists, for Works on Paper. Her work is included in the DiRosa Preserve and Collection in Napa and numerous other private collections in the Bay Area.

Pamela Glasscock was born in Colorado and studied fine art at Stanford University. In 1974 she met her future husband, artist Tony King in New York, where the couple pursued their careers until the early 1990s. During this time Glasscock focused on landscape and still life in silverpoint, a Renaissance drawing technique. The couple spent summers in California until 1992, when they relocated permanently to Freestone with their two sons. After the move, Glasscock began to paint flowers from her own garden and those of friends. Her drawings and watercolors of flowers are meticulously rendered, and created with amazing scientific precision.

The executive curator of Bedford Arts Gallery in Walnut Creek, Carrie Lederer has exhibited her own work in major arts venues and California museums.

Her complex paintings are inspired by fractals and botany.

Lederer's recent paintings depict turbulent gardens informed by nature's riotous beauty, or the deep space of our universe filled with a Byzantine intricacy of stars, snowflakes, and snowmen.

Haldan Art Gallery hours are:

Tuesday, Wednesday, Thursday 11am to 5:30pm

Friday 11am to 2:30pm

The gallery is open and free to the public and hours are subject to change. To schedule a tour, contact Diana Nelson at nelson@ltcc.edu or (530) 541.4660, ext. 335.

School Group Tours:

Lake Tahoe Community College welcomes all school groups to take advantage of the learning opportunity that exists in the gallery and Discovery Center. Teachers or class leaders should plan on a minimum of one hour for a group tour.

The college is located off Al Tahoe Boulevard on One College Drive. For more information, call (530) 541.4660, ext. 251.