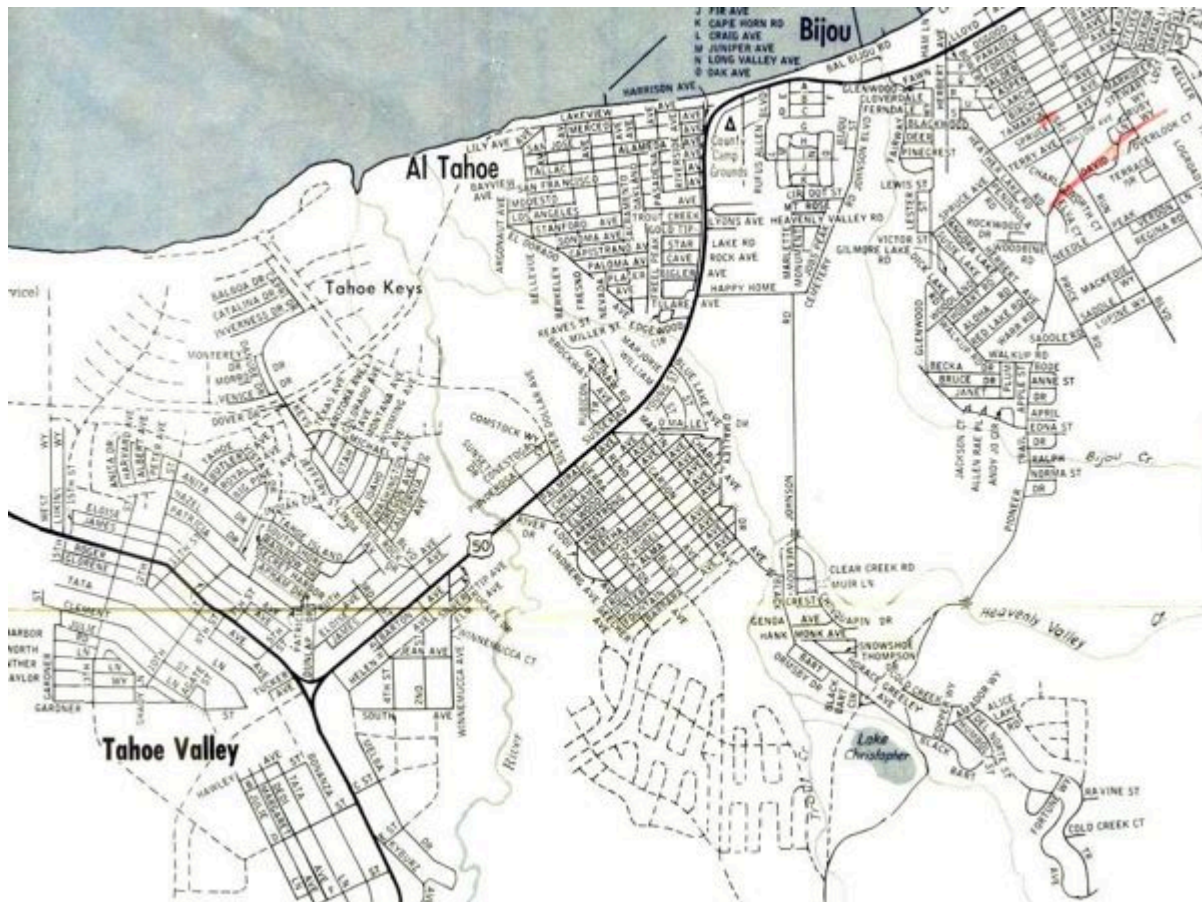


Then and now: Map of yesteryear a bit outdated



I guesstimate this map to be dated about 1961, issued by the then-chamber of commerce.

Notice the Y was still a Y. Tahoe Keys is naked. Al Tahoe Boulevard didn't exist, nor much of Pioneer Trail.

And some of those planned streets represented by dashes never happened.



The map to the left from the Lake Tahoe South Shore Chamber of Commerce shows the increase of roads and places to play.

— Bill Kingman