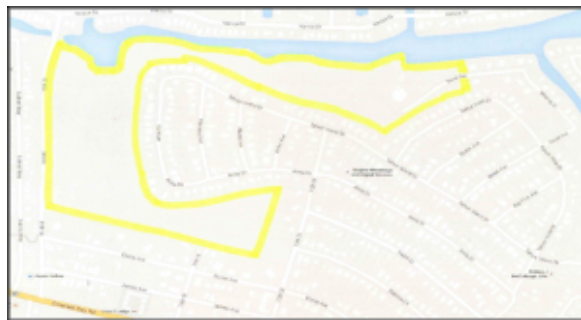


Police looking for knife used in stabbing

Updated Oct. 22 7:42am:

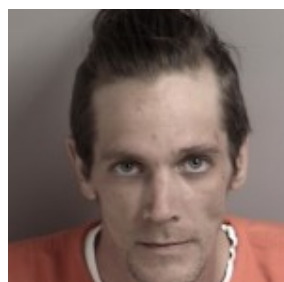
Police are looking for the knife that was used to stab a woman on Oct. 16 in South Lake Tahoe.

The weapon is described as being 10-inches long, with the blade being 6 inches. The knife has ornate etchings of an elk and/or a bear. It is likely the knife was abandoned while sheathed in a nylon cover of unknown color. The knife may have been placed under the end of a fallen tree root or older log.



Officers believe the knife was discarded in the outlined area.

Investigators believe the suspect discarded the weapon as he fled from the crime scene. Extensive searches of the initial scene and surrounding areas with two K9s have not turned up the knife.



Thomas Payne

Thomas Payne has been arrested on on attempted murder charges. His wife was taken to the hospital with life threatening injures. She has since been released and is doing well, according to officers.

If anyone discovers the weapon, they are asked to leave it and call immediately call police at 530.542.6100.

– Lake Tahoe News staff report