

SOUTH TAHOE PUBLIC UTILITY DISTRICT

Grizzly Mountain Booster Station Project Neighborhood Meetings

**Be informed,
Ask questions,
Provide
comments**

Two meetings are scheduled:

- 1) Wednesday, April 20, 2011 at 7 pm, and**
- 2) Saturday, April 23, 2011 at 10 am.**

Location: 1553 Grizzly Mountain Drive

*Basic
services for
a complex
world*



South Tahoe Public Utility
District (STPUD)

Contact:

John Thiel, P.E., M.B.A.,
Principal Engineer

Phone: 530-543-6209
jthiel@stpud.dst.ca.us

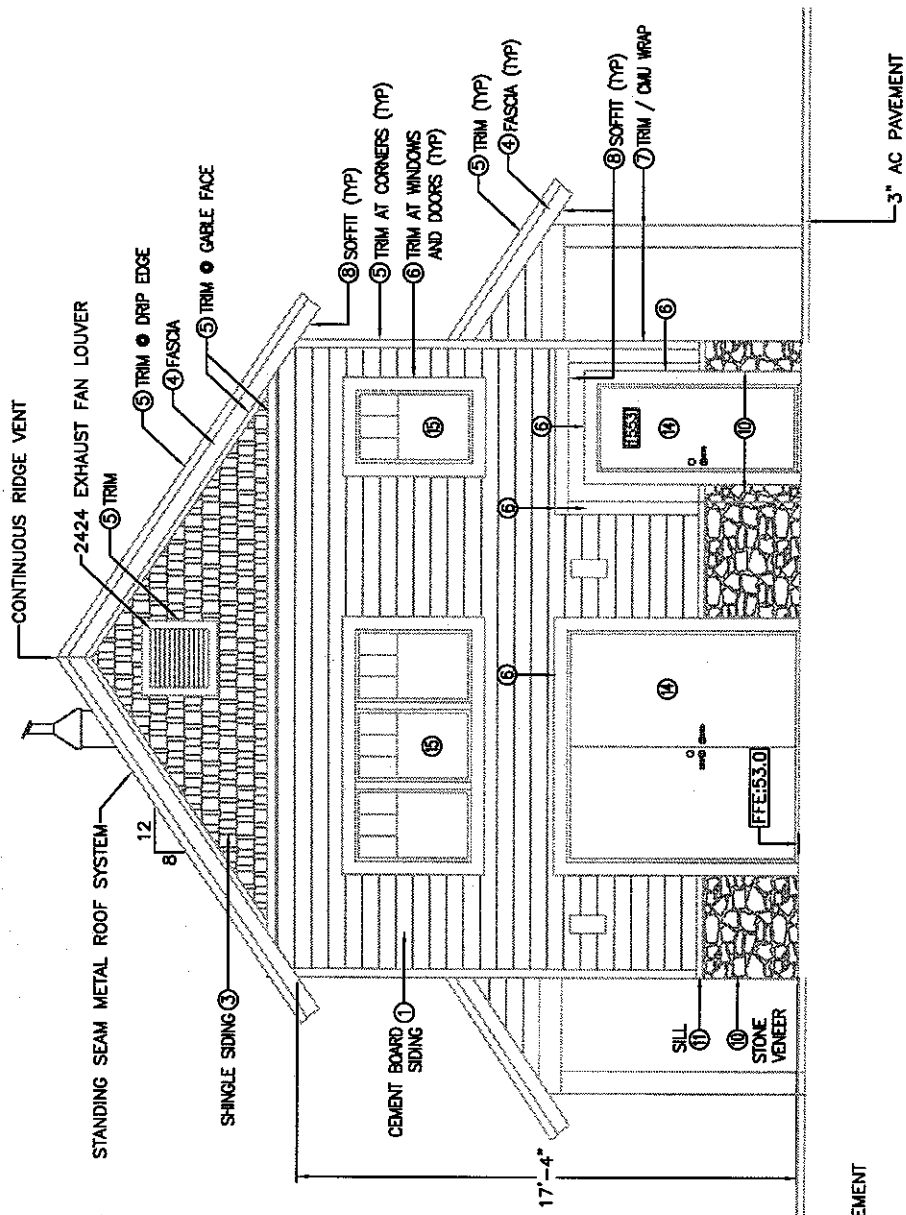
1275 Meadow Crest Dr.
South Lake Tahoe, CA
96150

The STPUD is planning to construct a new water booster pumping station to improve reliability and fire flow to your neighborhood and the extended Tahoe Paradise area. The planned location for the project is the vacant lot at 1553 Grizzly Mountain Drive near Little Bear Lane.

The booster station will provide you water from generally higher quality and more abundant water resources located in and around the City of South Lake Tahoe. It will also replace an old steel waterline located in the Upper Truckee River which is currently your only source of water. This existing waterline is vulnerable to failure and the District is being proactive in the development of this booster station project to sustain the reliability of your water service.

A Draft Initial Study / Environmental Checklist has been prepared and can be viewed on the District's website at STPUD.US. Go to "Current Notices" and click on the document from the project list. If you have trouble viewing, contact me for a hardcopy or email. The comment period is being extended to Monday, April 25, 2011 to incorporate additional comments that may arise from these neighborhood meetings.

Since the new booster station site is located in a residential area, the STPUD is designing the building in a residential style and scale, with board and shake siding, stone accents, a driveway, and landscaping with drip irrigation. Special design considerations are being made to mitigate noise and light production so that it is conducive to your neighborhood. We plan to begin construction early this summer. See the attachments for additional information and drawings.



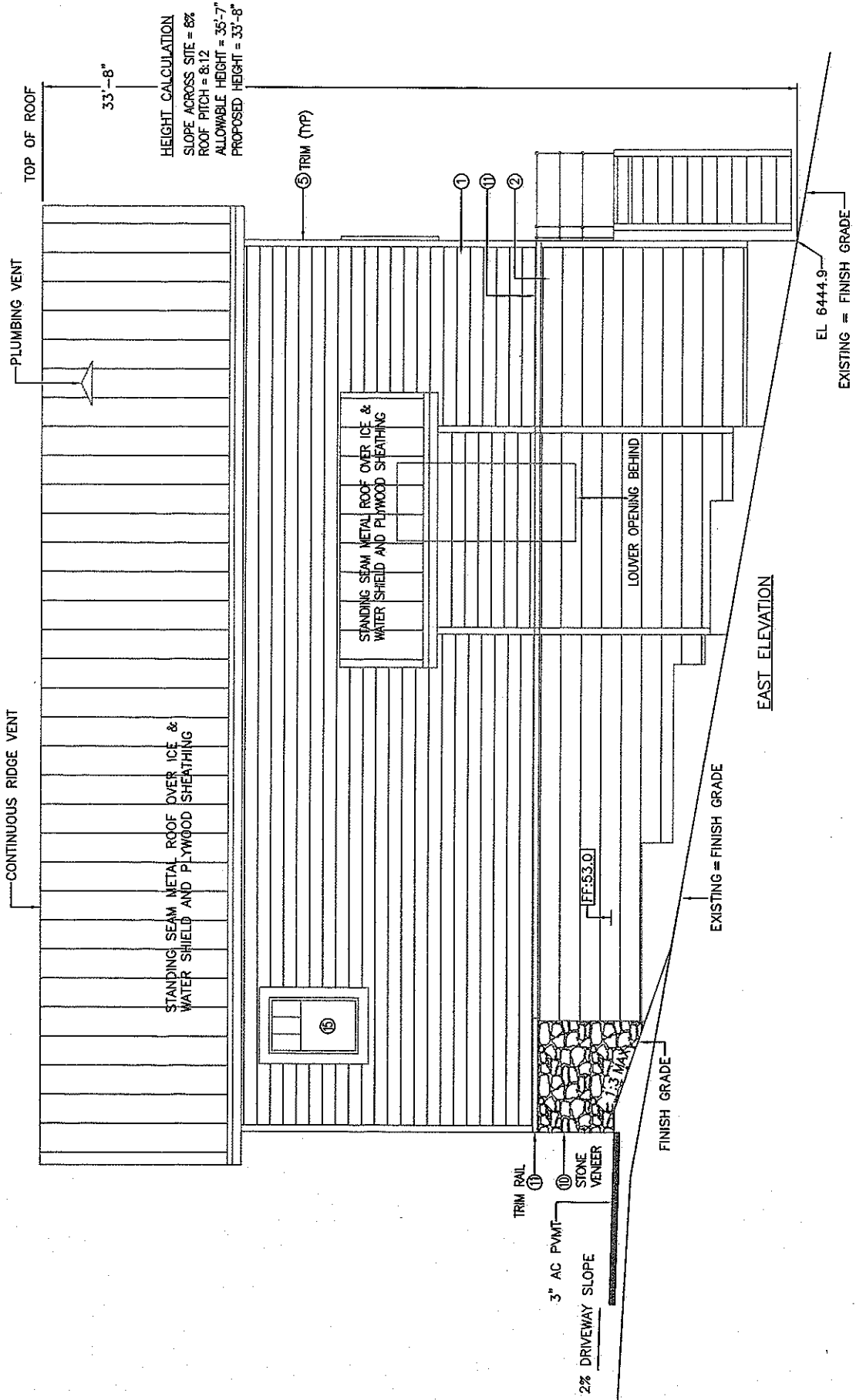
SOUTH ELEVATION

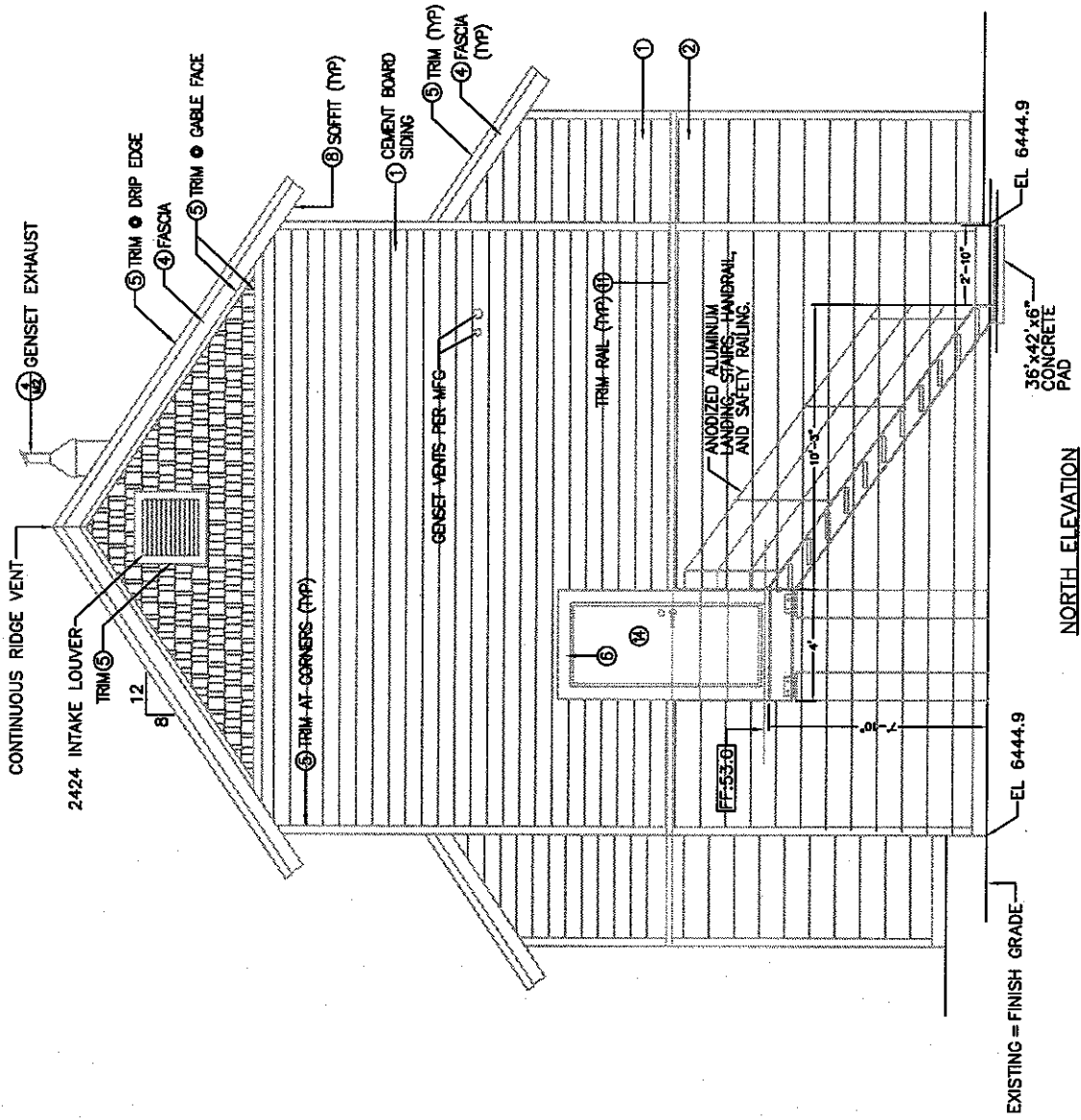
| MATERIAL INDEX: | |
|-----------------|--|
| NO. | DESCRIPTION |
| 1 | LAP SIDING W/ 7.0" EXPOSURE, HARDIEPLANK, SELECT CEDARMILL, COLORPLUS. |
| 2 | LAP SIDING W/ 10.75" EXPOSURE, HARDIEPLANK, SELECT CEDARMILL, COLORPLUS. |
| 3 | SHINGLE SIDING W/ 7" EXPOSURE, HARDIESHINGLE, STRAIGHT EDGE, NOTCHED PANEL, COLORPLUS. |
| 4 | FASCIA, 1x10, HARDIETRIM, 5/4, 1"x8.25" ACTUAL, RUSTIC, COLORPLUS. INSTALL OVER 2x SUB-FASCIA. |
| 5 | TRIM, 1x4, HARDIETRIM, 4/4, 3/4"x3.5" ACTUAL, RUSTIC, COLORPLUS. |
| 6 | TRIM, 1x6, HARDIETRIM, 4/4, 3/4"x5.5" ACTUAL, RUSTIC, COLORPLUS. |
| 7 | TRIM, 1x10, HARDIETRIM, 5/4, 1"x9.25" ACTUAL, RUSTIC, COLORPLUS. |
| 8 | SOFFIT, HARDIESOFFIT, 16", VENTED CEDARMILL, COLORPLUS. |
| 9 | BLOCKING AT LIGHT FIXTURES, HARDIETRIM, 5/4, RUSTIC, COLORPLUS. |
| 10 | STONE VENEER, EL DORADO STONE, COUNTRY RUBBLE, BORDEAUX, OE. |
| 11 | WAINSCOTT SILL, EL DORADO STONE, 2 1/2"x3", OVER STONE VENEER, OE. |
| 12 | TRIM RAIL, HARDIETRIM, BATTEN BOARDS, 2 1/2", RUSTIC, COLORPLUS. |
| 13 | WALL CAP, EL DORADO STONE, 12"x20", PEAKED, OE. |
| 14 | STEEL DOORS AND FRAMES: (2) 36"x84" (1) 96"x96" |
| 15 | ALUMINUM WINDOWS, FIXED, DBL PANE, LOW E2 (3) 30"x48" (1) 96"x48" TRIPLE. |

NOTE: USE HARDIEPLANK, HARDIESHINGLE, HARDIETRIM, HARDIESOFFIT PRODUCTS BY JAMES HARDIE, OR EQUAL.

3" AC PAVEMENT

3" AC PAVEMENT





CONTINUOUS RIDGE VENT

GENSET EXHAUST

2424 INTAKE LOUVER

TRIM ⑤

12

8

⑤ TRIM • DRIP EDGE

④ FASCIA

⑤ TRIM • GABLE FACE

⑤ TRIM AT CORNERS (TYP)

⑧ SOFFIT (TYP)

① CEMENT BOARD SIDING

⑤ TRIM (TYP)

④ FASCIA (TYP)

GENSET VENTS - PER MFG.

TRIM RAIL (TYP) ⑩

FF-53-01

⑥

⑭

ANODIZED ALUMINUM LANDING, STAIRS, HANDRAIL, AND SAFETY RAILING.

10'-3"

7'-0"

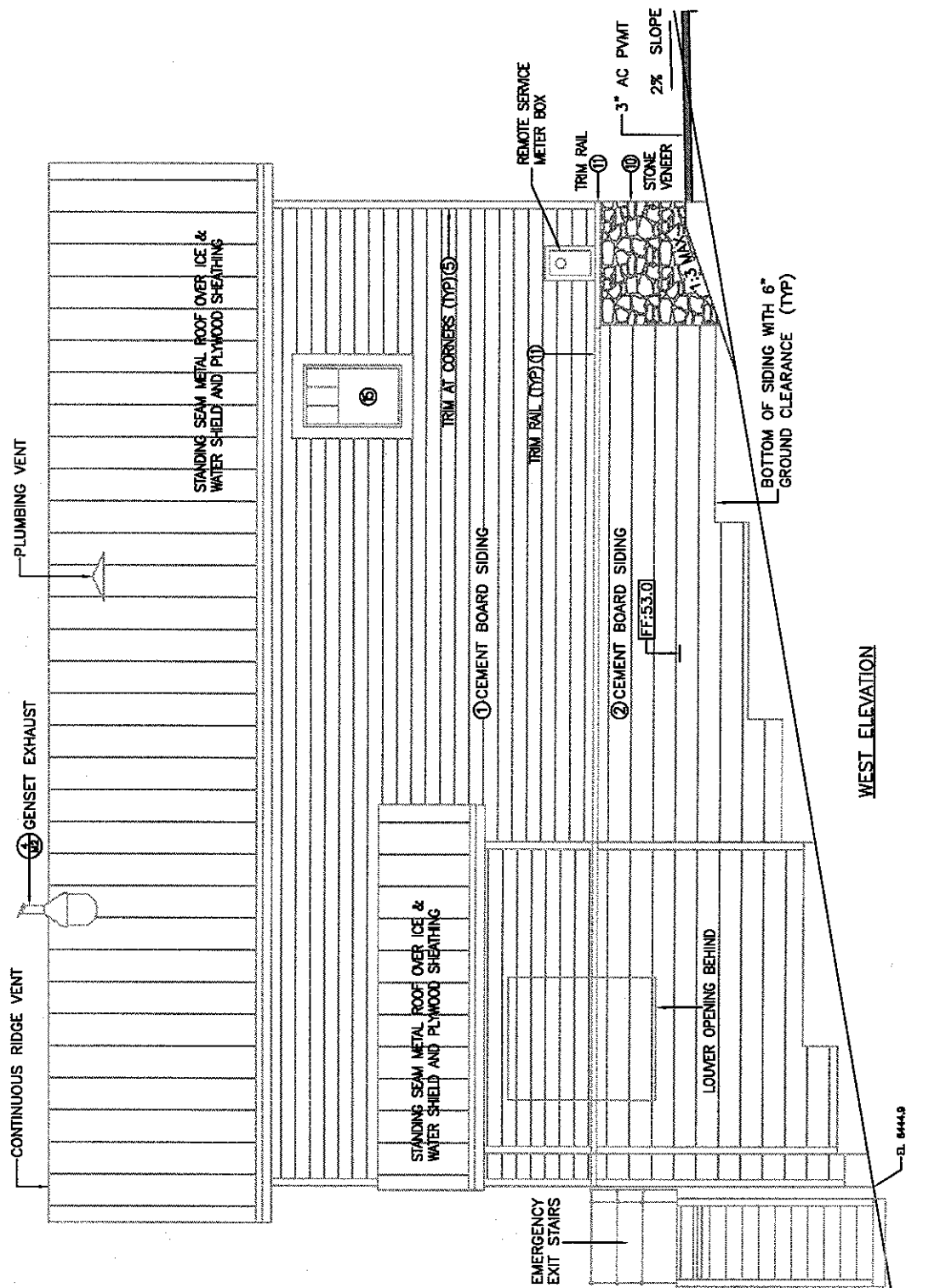
2'-10"

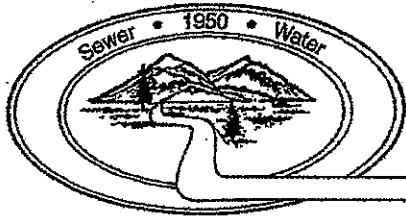
EXISTING = FINISH GRADE

EL. 6444.9

36"x42"x6" CONCRETE PAD

NORTH ELEVATION





South Tahoe Public Utility District

General Manager
Richard H. Solbrig

Directors
Chris Cefalu
James R. Jones
Mary Lou Mosbacher
Dale Rise
Eric Schafer

1275 Meadow Crest Drive • South Lake Tahoe • CA 96150-7401
Phone 530 544-6474 • Fax 530 541-0614 • www.stpud.us

BOARD AGENDA ITEM 6a

TO: Board of Directors
FROM: John Thiel, Principal Engineer
MEETING DATE: April 21, 2011 - 2 pm
ITEM - PROJECT NAME: Grizzly Mountain Booster Station

REQUESTED BOARD ACTION: Hold a Public Meeting to receive comments on the Initial Study and Negative Declaration of Environmental Impact.

DISCUSSION: The District has prepared an Initial Study (IS) with a finding that the proposed project will not result in any significant adverse environmental effects as a result of implementation. A Notice of Completion and Notice of Intent (NOI) to Adopt a Negative Declaration was filed with the State Clearinghouse on March 23, 2011, for a 30-day review period which expires on April 22, 2011. The NOI was also provided to property owners within 300 feet of the project. Questions and comments received on the project will be summarized at the public meeting.

April 25, 2011

Open the meeting to receive public input on the Initial Study and Negative Declaration of Environmental Impact for the project. A brief description of the project will be provided by District staff prior to taking public comment.

SCHEDULE: Pending Board approval.

COSTS: None.

ACCOUNT NO: 2029-8176 / GRIZBS

BUDGETED AMOUNT REMAINING: \$1,173,137

ATTACHMENTS: Draft Initial Study/Draft Environmental Checklist is available for viewing on the District's website www.stpud.us and at the District office. Notice of Intent is attached.

CONCURRENCE WITH REQUESTED ACTION:

CATEGORY: Water

GENERAL MANAGER: YES NO

CHIEF FINANCIAL OFFICER: YES NO

NOTICE OF INTENT

TO ADOPT A MITIGATED NEGATIVE DECLARATION OF ENVIRONMENTAL IMPACT FOR THE SOUTH TAHOE PUBLIC UTILITY DISTRICT GRIZZLY MOUNTAIN BOOSTER STATION PROJECT

Project Title: Grizzly Mountain Booster Station
Project Location: 1553 Grizzly Mountain Drive, South Lake Tahoe, CA 96150
APN 033-494-10
Lead Agency: South Tahoe Public Utility District
County: El Dorado County

PROJECT DESCRIPTION: The project consists of the construction of a new booster pump station to improve the primary water service to approximately 3,000 existing homes in the Flagpole and Twin Peaks water zones. The project increases water reliability to the Flagpole and Twin Peaks water zones by providing a second source of water to the area currently served by only one pipeline from the Arrowhead water zone (located in Meyers).

The new station is being funded by the District as the matching funds for a Fire Protection Partnership Funding / USFS Forest Health Fund grant that was used for the North Apache Booster station and Grizzly Mountain water line replacement project. With a standby pump and a diesel-powered standby generator, the Grizzly Mountain Booster Station will provide a substantial improvement to water reliability and fire protection in the Tahoe Paradise area. The proposed Booster Station building is about 968 square feet and 34 feet high, and is designed to blend with adjacent residential structures in the surrounding neighborhood. The booster station will be accessed by a new driveway from Grizzly Mountain Drive.

A waterline pipeline replacement (Grizzly Mountain Water Line Replacement Project) will be constructed by the District on Grizzly Mountain Drive and North Upper Truckee Road under a separate project to connect the booster station to the existing water zones. The environmental review for the pipeline replacement has been completed under a separate contract.

PUBLIC REVIEW PERIOD: STPUD has made this Notice of Intent (NOI), Mitigated Negative Declaration (MND), and Initial Study (IS) available for public review and comment pursuant to Section 15073(a) of the CEQA Guidelines. The 30-day comment period for the NOI, MND, and IS begins on March 23, 2011 and ends on April ~~22~~²⁵, 2011. Comments should be submitted to the South Tahoe Public Utility District at:

1275 Meadow Crest Dr.
South Lake Tahoe, CA 96150
Attn: John Thiel

PUBLIC MEETINGS: The District's Board of Directors will take comments on the IS/MND at their regularly scheduled Board Meeting on April 21, 2011 (2:00 p.m.) and will consider adopting the MND at its regularly scheduled Board Meeting on May 5, 2011 (2:00 p.m.) to which the public and all interested parties to this matter are invited. The meetings will be held at District offices (address above).

DOCUMENT AVAILABILITY: The MND and IS are available for review during regular business hours at the District offices. There is also an electronic copy available online at the District's website, www.stpud.us. If you require additional information, please contact Mr. Thiel at (530) 543-6209 or submit questions and comments by email at jthiel@stpud.dst.ca.us.